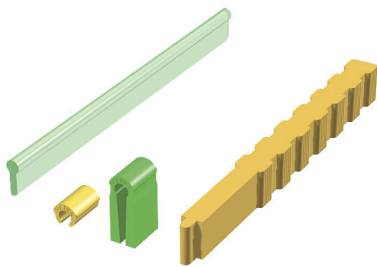


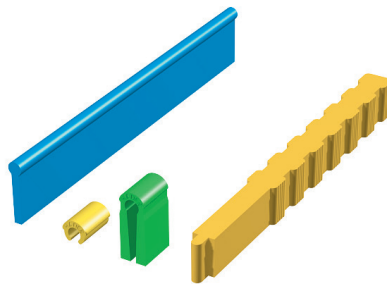
PROFILE ATTACHMENTS

PRECI-HORIX®

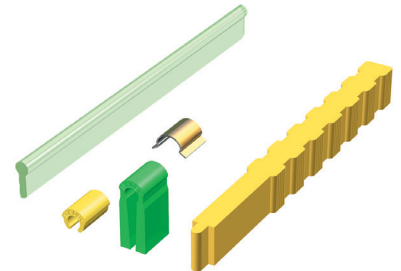
Burn-out plastic bar with elastic plastic riders. The bar attachment allows a rotational and a slight vertical movement by compression of the plastic riders. The riders are easily replaceable and available in three retention levels.



PRECI-HORIX STANDARD
1701 **KIT**
2 plastic bar patterns
6 yellow riders
6 processing riders
1 insertion tool



PRECI-HORIX PLASTICWAX
1731 **KIT**
2 PLASTICWAX bar patterns
6 yellow riders
6 processing riders
1 insertion tool



PRECI-HORIX COMBI
1741 **KIT**
1 plastic bar pattern
2 yellow riders
2 processing riders
2 stainless steel housings
1 insertion tool

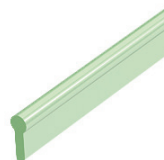
INDIVIDUAL COMPONENTS* & ACCESSORIES



PRECI-HORIX METAL HOUSING

Ultrathin stainless steel housing with titanium/nitrate layer (gold-coloured) for a perfect fit of the riders in the prosthesis. The housing is polymerized into acrylic resin (with the processing rider). Do not solder! Contains Ni.
Length: 5 mm - Width: 5 mm - Thickness: 0.2 mm

1706 **6 pcs**
1706B **50 pcs**



PRECI-HORIX PLASTIC PATTERN

Burn-out plastic bar pattern which may be reduced to facilitate incorporation into close bite situations. Cast in any hard alloy. For lab use only.

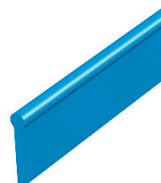
Bar height: 4 mm - Length: 50 mm - \varnothing 1.8 mm
1704 **6 pcs**
1704B **50 pcs**



PRECI-HORIX RIDER

Polypropylene
Height: 2.87 mm - Length: 5 mm - \varnothing 3.3 mm
Available in three retention levels:

normal retention:
1802 **yellow** **6 pcs**
1802B **yellow** **50 pcs**
reduced retention:
1805 **white** **6 pcs**
1805B **white** **50 pcs**
increased retention:
1806 **red** **6 pcs**
1806B **red** **50 pcs**
combination package:
1807 **2 y + 2 r + 2 w**
1807B **25 y + 15 r + 10 w**



PRECI-HORIX PLASTICWAX PATTERN

Bar pattern in PLASTICWAX which may be reduced to facilitate incorporation into close bite situations. Ideal for use with fast-setting investments.

Cast in any hard alloy. For lab use only.
Bar height: 8.25 mm (may be reduced to 3 mm)
Length: 50 mm - \varnothing 1.8 mm
1734 **4 pcs**
1734B **50 pcs**



PRECI-HORIX PATTERN ANALOGUE

Plastic pattern analogue for the working model, to be used in case of repair and relining, or when making a new prosthesis. For lab use only.

Height: 8.25 mm - Length: 50 mm - \varnothing 1.8 mm
1707 **2 pcs**



PRECI-HORIX PROCESSING RIDER

Adapt the plastic processing rider to the bar prior to polymerization. For lab use only.

Length: 5 mm (may be reduced to fit the bar height)
1703 **6 pcs**
1703B **50 pcs**



PRECI-HORIX INSERTION TOOL

Insertion tool for the 3 rider types
1705 **2 pcs**



PRECI-HORIX PARALLELING MANDREL

Paralleling mandrel for bars. Ideal for paralleling multiple pattern sections. For lab use only.

1708 **1 pc**

* See page 23 for table of alloys and materials.

PROFILE ATTACHMENTS

PRECI-BAR

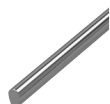
Bar attachment in two sizes: MINI and STANDARD. The bar is either rigid (U-shaped) or resilient (oval). A choice of three alloys for the rider. The bars in gold alloy/palladium alloy are available with or without retention and can be soldered with CEKA SOL FILIGRAN (yellow) or CEKA SOL W (white), or cast (burn-out plastic). The metal bars are available in two lengths: 50 mm and 200 mm.

MINI PROFILES

Height: 2.3 mm - Width: 1.6 mm



ORAX* RESILIENT OVAL MINI BAR
1103/B/OR 50 mm
1103/BL/OR 200 mm



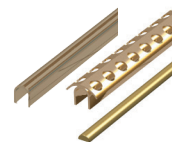
PALLAX* RESILIENT OVAL MINI BAR
1103/B/PA 50 mm
1103/BL/PA 200 mm



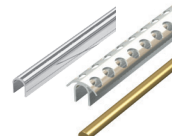
PLASTIC RESILIENT OVAL MINI BAR
For lab use only.
1012/B 4 x 50 mm

MINI RIDERS

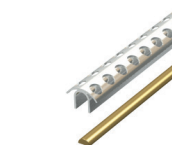
Height: 2.8 mm - Width: 4 mm



ORAX* MINI RIDER
With retention # 1102/H/MR/OR 50 mm
Without retention # 1102/H/ZR/OR 50 mm



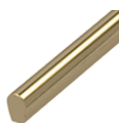
PALLAX* MINI RIDER
With retention # 1102/H/MR/PA 50 mm
Without retention # 1102/H/ZR/PA 50 mm



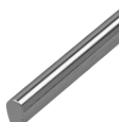
STAINLESS STEEL* MINI RIDER
Contains Ni.
1102/H/MR/IN 50 mm

STANDARD PROFILES

Height: 3 mm - Width: 2.2 mm



ORAX* RESILIENT OVAL STANDARD BAR
1101/B/OR 50 mm
1101/BL/OR 200 mm



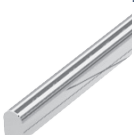
PALLAX* RESILIENT OVAL STANDARD BAR
1101/B/PA 50 mm
1101/BL/PA 200 mm



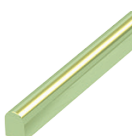
PLASTIC RESILIENT OVAL STANDARD BAR
For lab use only.
1013/B 4 x 50 mm



ORAX* RIGID U-SHAPED STANDARD BAR
1100/B/OR 50 mm
1100/BL/OR 200 mm



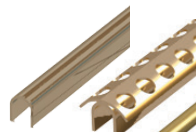
PALLAX* RIGID U-SHAPED STANDARD BAR
1100/B/PA 50 mm
1100/BL/PA 200 mm



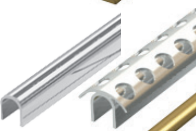
PLASTIC RIGID U-SHAPED STANDARD BAR
For lab use only.
1011/B 4 x 50 mm

STANDARD RIDERS

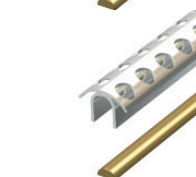
Height: 3.5 mm - Width: 5 mm



ORAX* STANDARD RIDER
With retention # 1100/H/MR/OR 50 mm
Without retention # 1100/H/ZR/OR 50 mm



PALLAX* STANDARD RIDER
With retention # 1100/H/MR/PA 50 mm
Without retention # 1100/H/ZR/PA 50 mm



STAINLESS STEEL* STANDARD RIDER
Contains Ni.
1100/H/MR/IN 50 mm

*TABLE OF ALLOYS

ORAX - Yellow - Au 70 - Pt 5 - Ag 12 - Cu 13
Heat treatment: 60 min at 400 °C (752 °F)
Melting range: 910-955 °C (1670-1823 °F)

PALLAX - White - Au 2 - Ag 37 - Pt 9.5 - Pd 37 - Cu 14.5
Heat-treatment: 60 min at 450 °C (752 °F)
Melting range: 1055-1130 °C (1931-2066 °F)

STAINLESS STEEL - White - Fe 73 - Cr 18 - Ni 8 - Mo, Cu, C, Mn and Si 1
Do not heat! Contains Ni.



PARALLELING MANDRELS
For lab use only.
1100 P
Paralleling mandrel for STANDARD bars
1102 P
Paralleling mandrel for MINI bars

PROFILE ATTACHMENTS

PRECI-CLIP

Round bar attachment with adjustable rider. The rider is available with occlusal or lateral retention for acrylic fixation. The riders are available in gold alloy or stainless steel. The profile can be soldered with CEKA SOL FILIGRAN, laser-welded or cast in any hard alloy.



PRECI-CLIP RIDER LA

Adjustable rider with lateral retention for acrylic resin. Do not solder the rider!
Stainless steel version contains Ni.

Height: 3.65 mm - Length: 3.5 mm - Space maintainer: 0.7 mm

Available in:

# 1105	ORAX* ALLOY	2 pcs + 2 space maintainers
# 1105AB	ORAX* ALLOY	20 pcs + 20 space maintainers
# 1106	STAINLESS STEEL*	2 pcs + 2 space maintainers
# 1106AB	STAINLESS STEEL*	20 pcs + 20 space maintainers



PRECI-CLIP RIDER OC

Adjustable rider with occlusal retention for acrylic resin. Do not solder the rider!
Stainless steel version contains Ni.

Height: 3.65 mm - Length: 3.5 mm - Space maintainer: 0.7 mm

Available in:

# 1125	ORAX* ALLOY	2 pcs + 2 space maintainers
# 1125AB	ORAX* ALLOY	20 pcs + 20 space maintainers
# 1126	STAINLESS STEEL*	2 pcs + 2 space maintainers
# 1126AB	STAINLESS STEEL*	20 pcs + 20 space maintainers



PRECI-CLIP BAR PROFILE

Round bar profile in ORAX* alloy for soldering with CEKA SOL FILIGRAN or in pure titanium for the laser technique.

Length: 50 mm - \varnothing 1.8 mm

# 1105/B	ORAX* ALLOY	1 pc
# 1109/B	PURE TITANIUM	1 pc



PRECI-CLIP BAR PATTERN

Round plastic bar pattern for casting in any hard alloy between natural teeth and between implants. For lab use only.

Length: 50 mm - \varnothing 1.8 mm

# 1014/B		4 pcs
----------	--	-------



PRECI-CLIP PATTERN ANALOGUE

Pattern analogue in hard self-isolating plastic for the working model, to be used in case of repair and relining, or when making a new prosthesis.

Height: 8.25 mm - Length: 50 mm - \varnothing 1.8 mm

# 1707		2 pcs
--------	--	-------

* See page 23 for table of alloys and materials.